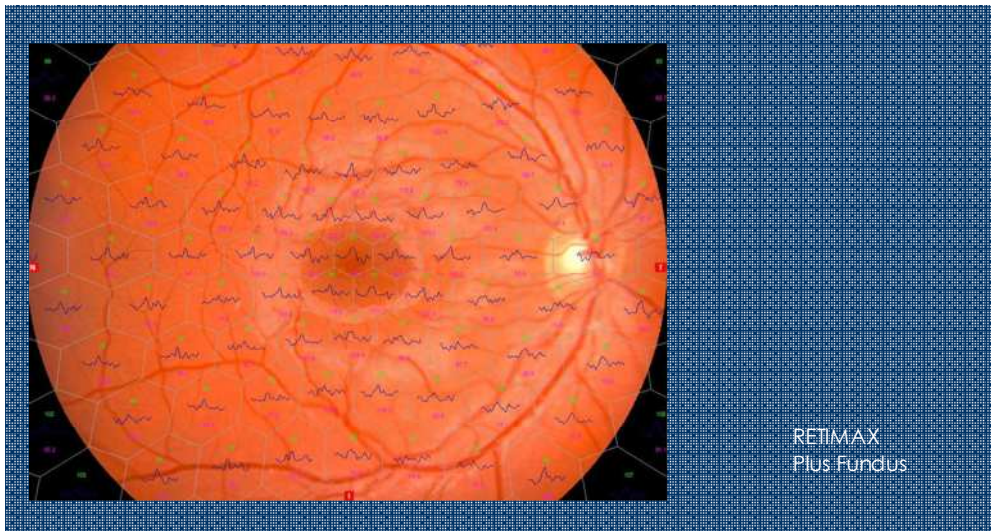


RETIMAX Plus Fundus



RETIMAX plus Fundus Adds new attractive feature at the Multifocal ERG, PERG and VEP test .

The combination Between Multifocal ERG and photographic Fundus of the Retina.

This new feature help in the detection and following the progression of a macular or other limited retinal area. With specific and accurate indication of the functionality of each retinal areas.

The new feature of RETIMAX is the overlap

RETIMAX advanced (Standard ERG, PERG, VEP, EOG, Glaucoma Hemifield Test) and RETIMAX Advanced PLUS (Standard ERG, PERG, VEP, EOG PLUS Multifocal ERG PERG VEP RETIMAX Advanced (Patent), is the newest and innovative device for the early detection of Glaucoma. RETIMAX performs an objective test based on ocular electrophysiology, useful for the functional assessment of retina and ganglion cells. RETIMAX is essential for the early detection of Glaucoma and

monitoring of its progression. RETIMAX Detects dysfunction in the retinal Ganglion cells before the irreversible process of cell death. RETIMAX **provides a rationale for early treatment to prevent or delay the death process.**



RETIMAX

RETIMAX Test is very fast requires 90 seconds. The readout is an electroretinogram (PERG) whose waveform is automatically analyzed, and the comparison of lower and upper retina hemifield show the deviation of the patient respect the normal subject for the early diagnosis of glaucoma. RETIMAX provides to evaluate the function of retinal ganglion cells within 30 degrees centered to the fovea of the retina, and can be compared with the Mean Defect of the Standard Automated Perimetry. Different from perimetry, the

two eyes are tested simultaneously, and the response does not depend on subject's attention (thereby avoiding the problem of false positive/negative responses and learning). The analysis of both hemifield avoid the variability due to the age of the patients, cataract and refractive problem. What is more important, RETIMAX test is often altered before Standard Automated Perimetry. More than 40% of pre-perimetric glaucoma patients have abnormal RETIMAX test. The system is very compact and user friendly.



WITH RETIMAX... YES WE CAN...

ISCEV (International Society for Clinical Electrophysiology of Vision) Issued new rules for the standardization of Electroretinogram. See (ISCEV ERG 30 – Rev 2008-09-01) RETIMAX is fully conform whit ISCEV standard.